

Description

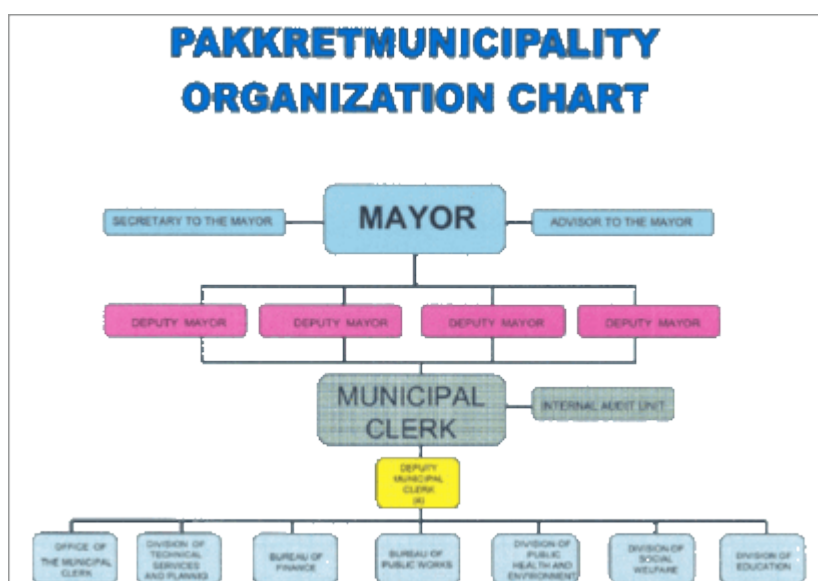
Location (accessibility, multiplier effects on neighboring regions), population, size, reputation in the country)

The Pakkret Municipality is located on the Chao Praya River Plain which is suitable for agricultural activities, such as fruit orchard. The tasty well-known fruit produced within the area are durian, pomelo, mangosteen, and banana. The area covers 36.04 sq.km, consists of 34 villages in five tambons or subdistricts, namely Pakkret, Bangpud, Banmai, Bangtalad, and Klonglau. The size of population 178,797 people.

The Municipality of Pakkret borders with the Phatumthani Muang District in Phatumthani Province to the north, with the Nonthaburi City Municipality to the south, with the Donmuang District in Bangkok to the east and with the Chao Praya River (at Bang Tani Village, Pakkret District) to the west.

However, the accessible location of the municipality from Bangkok (about 20 km) and convenient communication routes (land route and waterway), a large space of land in the municipality had been transformed from agricultural purpose to residential and commercial ones. Investment, especially on house construction, is also thriving. About hundreds of home villages have been constructed.

Political/legal position in the respective state structure (name of mayor and term in office, next election period, decision-making structures)



This project is co-funded by the European Union.

A Project implemented by the consortium: Konrad-Adenauer-Stiftung e.V., Thailand Environment Institute (TEI), Local Government Development Foundation Inc. (LOGODEF), United Cities and Local Governments for Asia and Pacific (UCLG-ASPAC), Association of Indonesian Regency Governments (APKASI), Association of Cities of Vietnam (ACVN), and National League of Communes/Sangkats of the Kingdom of Cambodia (NLC/S).

- The municipality council plays a role similar to that of the Parliament, in being representative of the people in the municipality Area, in controlling the performance of the municipal executive board or councilors who are selected among elected member. The supervision can be done by means of questioning or debating any matter on the municipality administration.
- The Municipality Executive Board is headed by a mayor, and deputy Mayor to conduct municipal activities. The Municipal Executive Board Including the mayor are under the supervision of Municipality Council which is elected by the local people.
- Mayor : Mr. Vichai Bandasak

Human and financial resources (no of civil servants working in the public administration, overall annual financial budget, etc)

- Total number of civil servants : 1,084
- Budget in 2011:

Revenue: 808,863,400 THB

Expenditure: 820,115,200 THB

Recurring Expenditure: 808,853,000 THB

Capital: 208,382,200 THB

General: 37,129,300 THB

Specific political, social, cultural and economic character/framework

- **Economic Condition**
Livestock such as Cow and milchcow are raised in Bangtalad Subdistrict. There are various types of business, as, wholesaling, retailing, land and property business etc. Up to 223 manufactures are located within the municipality, such as, textile, tailoring, electronic, plywood, paper, food, and rice-mill industries. These manufactures are categorized into three sized, namely: 185 small sized factories, 31 medium sized factories, and seven large sized factories. Banking, market and hospitality services in municipality includes 12 banks, four fresh markets, three department stores, five hotels, one pawnshop, and three public/health parks.
- **Social Condition**
In early 2011, there are 178,797 people. living in the Pakkret municipal area. The number of households were about 47,169. At present, there is no school operated



This project is co-funded by the European Union.

A Project implemented by the consortium: Konrad-Adenauer-Stiftung e.V., Thailand Environment Institute (TEI), Local Government Development Foundation Inc. (LOGODEF), United Cities and Local Governments for Asia and Pacific (UCLG-ASPAC), Association of Indonesian Regency Governments (APKASI), Association of Cities of Vietnam (ACVN), and National League of Communes/Sangkats of the Kingdom of Cambodia (NLC/S).

by the municipality. However, there are many educational institutes established within the area, namely: 11 public and private primary schools, 26 public and private high schools, and one university. The municipality embraces different religions with the following worship places: 16 Buddhist temples, two Christian churches, one Muslim temples, and four joss houses. There are two public and two private hospitals, and two municipality public health service center. The municipality public health services include nursing, mother and child care, health promotion, communicable disease prevention control, slaughterhouse, sanitation and cleaning.



This project is co-funded by the European Union.

A Project implemented by the consortium: Konrad-Adenauer-Stiftung e.V., Thailand Environment Institute (TEI), Local Government Development Foundation Inc. (LOGODEF), United Cities and Local Governments for Asia and Pacific (UCLG-ASPAC), Association of Indonesian Regency Governments (APKASI), Association of Cities of Vietnam (ACVN), and National League of Communes/Sangkats of the Kingdom of Cambodia (NLC/S).